

FORMER WAUSAU PAPER MILL

10 Mechanic Boulevard
Groveton
New Hampshire 03582

Public Auction— Live On-Site & Webcast

DATE: Wednesday,
November 5th

TIME: 10:00 A.M.

INSPECTION:

Monday,
November 3rd
& Tuesday,
November 4th,
Beginning at 9:00 A.M.
or by Appointment

HIGHLIGHTS:

- Multi-Million \$\$ New Stores Inventory, Pumps, Motors, Bearings, Valves, Controls, Transformers, Stainless Steel Pipe, Wire, High Pressure, Steam, Hydraulic Fittings
- Caterpillar 3508B 1,000 kW Diesel Generator
- Paper Converting Equipment
- Forklifts, Crane, Racking, Compressors
- Machine, Weld, Fabrication Shops
- (200+) Like New VIDMAR Tool Cabinets

TO BE SOLD BY PRIVATE TREATY

- Industrial Real Estate 500,000 Sq. Ft. Building on 11 Acres, with Wastewater Treatment System & Dam
- (2) Modern Paper Machines From Pulping to Finishing
- 10.7 MW Combined Cycled Electric Power Co-Generation Plant—Rebuilt in 2008

For complete catalog
crgauction.com
1.800.300.6852

CRG AUCTION

**LIVE
ON-LINE BIDDING
AVAILABLE!**



BID ONLINE AT

BidSpotter.com

Auction Specialists • Appraisal Experts • Online or On-site
1654 King Street, Enfield, Connecticut 06082
(860) 623-9060 • (800) 300-6852 • Fax: (860) 623-9160
Bill Firestone, President, NH Lic. #2677

MULTI-MILLION \$\$ NEW STORES, PARTS, & SUPPLY INVENTORY

Massive Quantity of New TIMKEN, FAFNIR, AMI, BROWNING, NTN, and ROYERSFORD Bearings, in packing, various sizes, including roller bearings, mounted bearings, end bearings, and ball bearings, multiple quantities.

New SIEMENS, ABB, GE, US MOTORS, DAYTON, RELIANCE and BALDOR AC and DC Drive Motors, 1/2 to 500 HP, multiple quantities, w/AC/DC servo drive controls, VS drive controls.

GOULD, WORTHINGTON, GORMAN RUPP, and ROTOJET Stainless Steel Pumps; JAMESBURY, WILLIAMS, HENRY VOGG, FISHER, ROSEMONT, THOMSON, and P.M.V. Ball Valves, Gate Valves, Electronic Valve Actuators, Flow Controls, Hydraulic Pumps, multiple quantities, pallet lots, large assortment of sizes.

Stainless Steel Pipe, Cable and Wire; High-Pressure Pipes and Fittings; Steam and Hydraulic Pipe, Fittings, Electrical and Plumbing Supplies; Hardware and Fasteners; and More!

DIESEL GENERATOR

2001 CATERPILLAR 3508B 100 kW Cold Start Diesel Generator, 8-cylinder, 4-cycle turbo-charged engine, w/after cooler, Cat SR4-B AC generator, 910 kW prime, 832 kW continuous skid-mounted, 1,200 KVA, digital voltage regulator, battery start, remote annunciator, only 216 hrs.



CAT DIESEL GEN SET

PAPER CONVERTING – PACKAGING EQUIPMENT

PERKINS Hydraulic Dual Roll Embosser, 11" dia. top steel roll, 24" dia. bottom cover roll, Flak gear boxes, Montalvo tension, speed, and pressure control, (2) installed linen rolls on embosser w/(5) spare top rolls and (3) spare bottom rolls.

JAGENSBERG Synchro-Gly ES-116 63" Sheeter, (2) 60 HP AC drives, (7) backstands/unwinds for 60" dia. rolls, 3"/6" coreless chucks, w/1.1 kW pickup drive motors, 72" max. width, Erhard & Leimer SG28602701 alignment station, w/(3) Jagensberg slitter positions, top/bottom incline delivery to layboy and piler, 4-line piler w/cross section delivery table.

PEMCO Side Kicker, Scheider 3551 stacker, air table conveyor to Pemco 141 R case packer w/ Nordson hot melt gluer.

PEMCOMATIC 74 DHR Ream Wrapper, w/(2) labelers.

FORKLIFTS, CRANE, AIR COMPRESSORS, & RACKING

DROTT 1800 Diesel All-Terrain Hydraulic Boom Crane, 80' extendable boom, 18-ton capacity, only 385 hours!

(2) 2005 HYSTER S70 FT Solid Tire LP Forklifts, 7,000-lb. capacity, w/sideshift, 181" mast.

2003 HYSTER S65XM Solid Tire LP Forklift, 4,000-lb. capacity, w/sideshift, roll clamp, 181" mast.

2003 HYSTER S35 XM Solid Tire LP Forklift, 3,300-lb. capacity, sideshift, 189" mast.

2002 HYSTER 120XM Solid Tire LP Forklift, 8,000-lb. capacity, sideshift, 185" mast, w/roll clamp.

2002 HYSTER S50XM Solid Tire LP Forklift, 4,500-lb. capacity, sideshift, 189" mast.

2002 HYSTER S45XM Solid Tire LP Forklift, 4,000-lb. capacity, sideshift, 189" mast.

2002 HYSTER S35 XM Solid Tire LP Forklift, 3,300-lb. capacity, sideshift, 159" mast.

(3) 2001–2000 HYSTER S45XM Solid Tire LP Forklifts, 4,000-lb. capacity, sideshift, 189" mast.

2000 HYSTER S65XM Solid Tire LP Forklift, 3,750-lb. capacity, sideshift, 189" mast, w/sideshift.

1999 HYSTER S80 XL Solid Tire LP Forklift, 8,000-lb. capacity, sideshift, 120" mast.

(4) 1999–1998 HYSTER S45XM Solid Tire LP Forklifts, 4,500-lb. capacity, sideshift, 189" mast.

1997 HYSTER H55XM Solid Tire LP Forklift, 5,400-lb. capacity, sideshift, 151" mast.



SHEETING LINE



(1 OF 7) PAYOFF-UNWIND STANDS ON SHEETER



EMBOSSER



FORKLIFTS W/ROLL CLAMPS



HYSTER FORKLIFTS

For complete catalog and more information visit

crgauction.com

or call 1.800.300.6852

**LIVE
ON-LINE BIDDING
AVAILABLE!**

WEDNESDAY, NOVEMBER 5th

1996 HYSTER S40XM Solid Tire LP Forklift, 4,000-lb. capacity, sideshift, 189" mast.

1988 HYSTER S80XC Solid Tire LP Forklift, 9,000-lb. capacity, sideshift, 172" mast.

TOYOTA 5FGC20 Solid Tire LP Forklift, 3,750-lb. capacity, sideshift, 185" mast.

KOMATSU FB15MH-2 Solid Tire Electric, 2,780-lb. capacity, sideshift, 169" mast, 36V.

2005 CROWN RC 3000 Electric Stand-Up Fork Truck, 36V, 2,500-lb. capacity, 190" mast.

(2) 2003 CROWN SP 3200 Electric Order Pickers, 36V, 3,000-lb. capacity, 240" height.

(4) CROWN RD-300 Electric Narrow Aisle Double-Reach Fork Trucks, 2,750-lb. capacity, 240" height.

CROWN 40GPW-4-14 Electric Rechargeable Battery Changer, 24V.

CROWN PE3520-60, 6,000-lb. capacity, 24V, 60" forks.

1998 ATLAS COPCO ZR250 Rotary Screw Air Compressor, 300 HP.

ARTCO Structural Steel Pallet Racking, over (525) sections, 21' high x 48" deep, 3-tier, 10' long gross beams, all w/wire decking.

(200+) LIKE-NEW VIDMAR TOOL CABINETS

MACHINE, WELD, & FABRICATION SHOP

(2) MARVELSERIES Mark II Series 8 Horizontal Band Saws.

BRIDGEPORT Vertical Milling Machines, w/ power feed tables, DRO.

JET 15" x 50" Engine Lathe.

NEBEL 32" x 144" Engine Lathe.

SOUTH BEND 16" x 72" Engine Lathe.

J. McCABE 24" x 28" Engine Lathe.

CARLTON 4' x 11" Column Radial Arm Drill.

MILLER Trailblazer 250G Welding Generator.



DROTT 1800 HYDRAULIC BOOM CRANE



ATLAS COPCO 350 HP COMPRESSOR



VIDMAR CABINETS



MARVEL VERTICAL BAND SAW



BRIDGEPORT VERTICAL MILLING MACHINE

HOBART Fabstar 4030 DC CV Welder.

MILLER 330 Amp AC/DC CC Welder.

AIRCO CV300 Aircomatic 300 Amp CV Welder.

AIRCO Bumble Bee DC Welder.

CHICAGO 8' and 4' Manual Brakes.

PEXTO 3' Manual Shear.

PEXTO 36" Initial Pinch Roll.

ENERPACH H-Frame Hydraulic Press.



SMALL SAMPLE OF NEW PARTS, SUPPLIES, & STORES

In Conjunction With **PERRYVIDEX**

Selling by Private Treaty



Capital Recovery Group, LLC



www.perryvidex.com (609) 267-1600



BUILDING HIGHLIGHTS

- Situated in New Hampshire's "North Country" Amid the Largest Forestry Area in New England
- 11-1/2 Acres on Upper Ammonoosuc River
- 22'-28' Ceiling Heights
- 5,000± Sq. Ft. Office
- (18) Loading Docks, (2) Train Docks, (2) Ground Level Docks
- Wood Chip Loading/Handling
- Rail Siding
- Well Maintained
- On-Site Waste Water Treatment System
- Active Rail Spur

POTENTIAL USES

- Biomass Co-Gen Facility
- Wood Pellet Manufacturing
- Furniture Manufacturing
- Warehouse/Distribution
- Call Center
- Incubator Space
- High Demand Steam Manufacturing and Processing

ECONOMIC INCENTIVES

- Extensive State and Municipal Economic Development Incentives
- Highly Trained, Motivated Local Work Force
- "Green Technology" Research and Manufacturing Potential
- For Sale or Lease
- Possible Owner Financing Available
- Dam and Water Rights on River

EXCELLENT DEVELOPMENT OPPORTUNITY!



For complete real estate information and bidders packet visit crgauction.com
or call 1.800.300.6852

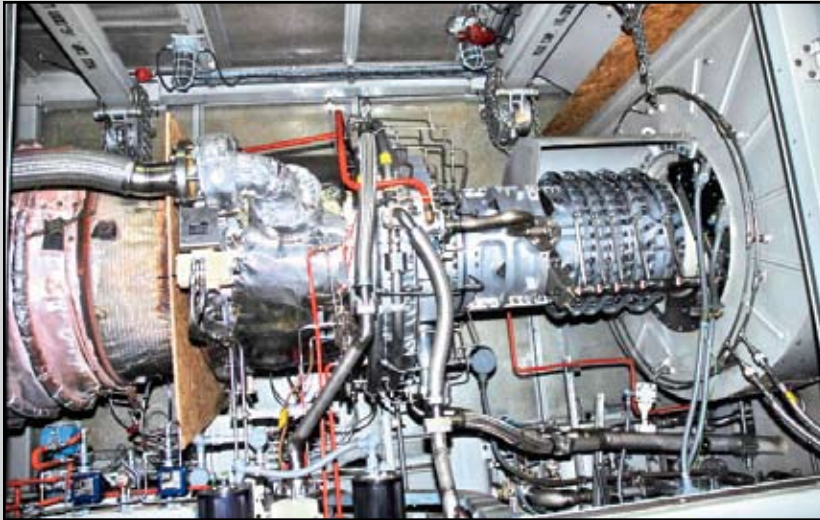
Selling by Private Treaty



Capital Recovery Group, LLC



www.perryvidex.com (609) 267-1600



SOLAR TAURUS NG TURBINE

- 2001 SOLAR TAURUS 70 7.2 MW Natural Gas-Fired Turbine, operated at 340 PSIG, can be converted to liquid or dual fuel, equipped w/SoLoNOx exhaust, manufactured in 2001. Mounted on heavy skid base frame in sound attenuated enclosure w/main gearbox and 4,160V generator w/exciter and governor. Unit is electric start w/synchronizing and paralleling switchgear, microprocessor based controls, air inlet filtration system, fire protection system, exhaust muffler, lubricating system, fuel handling system, vibration monitor, silencer and interconnecting ducting. Heat rate - 10,363 BTU/kW-Hr. Exhaust temperature 913°F. NOx level of emissions: -18.84 PPM or .069#/MM BTUs.

Turbine engine rotor, combustors, liners, injectors, and new bearings rebuilt to '0' hours and installed 7/08.

- 2001 E.R.I. Series MFA-5-120-SH 170,000 Lbs./Hr. HRSG, 500 PSIG DP at 650°F SH package watertube boiler. Shop assembled 'A' type design, composed of: 54" ID steam drum and (2) 24" OD lower drums w/2" OD tubes. Total heating surface 29,877 sq. ft. Boiler has a 2,022 sq. ft. ±650°F. superheater, and 22,351 sq. ft. economizer. Built in accordance w/ASME code and bearing NB and HSB stamping. Equipped w/a Verloop package natural gas burner. Equipped w/combustion and safeguard controls, fuel trains, duct connection to combustion turbine having 954°F gas temperature input. Boiler will generate 27,400 lbs./hr. w/its own burner, w/inlet guillotine damper closed. Includes all standard boiler valve trim, regulators and controls, FD fans w/motors, interconnecting piping, ductwork, and valves.

- GENERALELECTRIC 3500 KW Extraction, back pressure (non-condensing) steam turbine generating set composed of a multi-stage, multi-valve steam turbine presently operating at 400 PSI at 650°F w/A.E. 125 PSIG and 30-lb. BP exhaust. Direct connected to an 8,000 KVA GE A.C. generator, 3/60/4,160V with exciter, throttle valve, new electronic governor, oil lube system w/pumps, new controls and switchgear. Present steam rate is ±30.3 #/kW-Hr. Unit was originally rated at 3,500 kW as a straight condensing unit, operated at 190 PSIG at 843.7°F, 1.5" HG ABS exhaust at 4,160V. This 12-stage multi-valve turbine was reworked and rerated to the above

extraction, back pressure machine. The 10th stage was removed for the 30-lb. back pressure feature. Turbine rows 1-7 were replaced w/new, and some nozzles were replaced. The generator and rotor have been rewound, and upgraded in capacity w/the addition of a new generator cooler.

- Complete System w/INGERSOLL-RAND Centrifugal Horizontal Split Boiler Feed Pump, Flowserve boiler feed pumps, Glegg water treatment and filter system, Elliott de-aerating feed water heater, Dry Step Up transformer from 600V Wye GRD to 4,160V Delta, switchgear and all controls.



TRANSFORMER



GE STEAM TURBINE AND GENERATOR



SOLAR TAURUS 7.2 MW NATURAL GAS TURBINE GENERATOR

Selling by Private Treaty



Capital Recovery Group, LLC



www.perryvidex.com (609) 267-1600

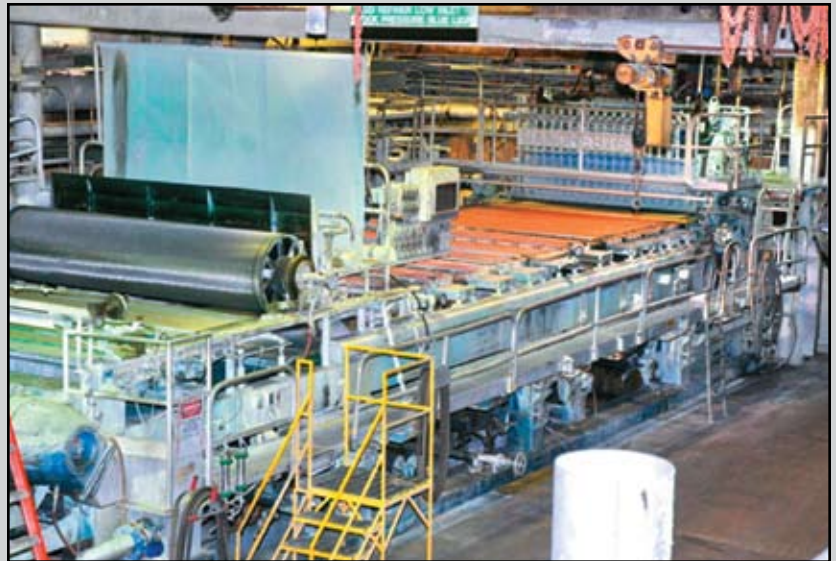
(2) MODERN PAPER MACHINES FROM PULPING TO FINISHING

MANCHESTER 162" (4.05m) Wide 142" (3.55m) Trim Paper Machine, rated for 150 tons per day at an operating speed of 2,500 FPM for 50-lb.–150-lb. basis weights, making an assortment of printing and writing grades, includes Sandy Hill 162" wide pressurized headbox w/(21) automatic adjusters. The machine includes:

- BELOIT DD Series 4500 Mdl. 4334 SM Refiner, 34"/38" discs, w/800 HP motor.
- BELOIT JONES Fibermaster Refiner, w/350 HP motor.
- GOULDS Mdl. 3415 Split Case 14X16-18 Fan Pump, rated for 1,200 RPM, w/400 HP motor.
- (4) Each NASH Vacuum Pumps, 904-P2, 904-P2, 904-L2, 6002, all tested in 2002.
- 4-Stage GL&V 350 Clean-Pack Centricleaners.
- BIRD Mdl. 14 Headbox Screen.
- MEASUREX Profiler Adjusters.
- VIB Steam Box Over the Couch.
- TRI-NIP Press Section, (Sandy Hill/Manchester).
- 1st Dryer Section, 1971 ASME Code 75 PSI, 48" dia. x 159" face, w/Johnson rotary steam joints (34 each).
- Inclined SANDY HILL Size Press.
- 2nd Dryer Section, 1971 ASME Code 150 PSI, 48" dia. x 159" face, w/Johnson rotary steam joints (12 each).
- ENERQUIN Air Mark III Ventilator, for felts.
- MANCHESTER Single Nip 152" Face x 30" Dia. Farrell Kusters Calander.
- ABB SMART Platform Scanner, basis, moisture, ash, freeness.
- 151" Face x 42" Dia. GL&V Reel, for 60" dia. rolls, fixed doctor blade on a 12" dia. core with (2) each 13" dia. spools.
- JAGENBERG Shaftless Vari Step (VS-43) 142" Face 2-Drum Rewinder, 60" dia. rewind, 80" dia. unwind, rated at 6,000 FPM, w/(18) slitters, 200 HP GE DC motors, includes trim blower system in basement.

MANCHESTER 122" (3.05m) Wide 106" (2.7m) Trim Paper Machine, rated for 265 tons per day at an operating speed of 2,500 FPM for 50-lb.–150-lb. basis weights, making an assortment of printing and writing grades, includes Manchester 142" wide pressurized headbox w/(21) automatic adjusters. The machine includes:

- BIRD JONSSON 24 Vibrating Screen, stainless steel construction, w/3 HP motor.
- BELOIT DD Series 4000 Refiner.
- CLAFLIN 303 Refiner.
- GOULDS 16x18-22 Fan Pump, 10,500 GPM, 158" HD at 1,180 RPM.
- GOULDS 3415 14x16-18, for centricleaners.



VIEW OF PM 6 160" TRIM, 50-LB.–150-LB.

- (4) Each NASH Vacuum Pumps, 904-R2, CL-4002, CL-2001, CL-4001, CL-1001, all tested between 1999–2002.
- 4-Stage GL&V 350 Clean-Pack Centricleaners.
- BIRD Mdl. 40 Headbox Screen.
- MEASUREX Profiler Adjusters.
- TRI-NIP Press Section.
- 1st Dryer Section 1971 ASME Code 125 PSI, 60" dia. x 120" face w/Johnson rotary steam joints (30 each).
- Inclined MANCHESTER Size Press.

- 2nd Dryer Section, 1971 and some 1972 ASME Code 125 PSI, 60" dia. x 120" face w/Johnson rotary steam joints (13 each).
- ENERQUIN Air Mark III Ventilator, for felts.
- MANCHESTER Single Nip 118" Face x 24" Dia. Kusters Calander.
- ABB Smart Platform Scanner.
- 120" Face x 36" Dia. GL&V Reel, for 60" dia. rolls on a 12" core.
- JAGENBERG 116" Face 2-Drum Vari Step Rewinder, 6,000 FPM, w/(13) slitters, 200 HP GE DC motors.



BELOIT 34" EMC 4500



116" W JAGENBERG VARIED STEP 6,000 FPM

auctioneers
appraisers
advisors



1654 King Street
Enfield, CT 06082



Presorted
First Class Mail
U.S. Postage
PAID
Eugene, Oregon
Permit No. 305

PUBLIC AUCTION— LIVE ON-SITE & WEBCAST FORMER WAUSAU PAPER MILL

Groveton, New Hampshire USA

DATE: Wednesday, November 5th

TIME: 10:00 A.M.

INSPECTION: Monday, November 3rd
& Tuesday, November 4th, Beginning
at 9:00 A.M. or by Appointment

crgauction.com

FORMER WAUSAU PAPER MILL

Groveton,
New Hampshire USA

Public Auction— Live On-Site & Webcast

DATE: Wednesday,
November 5th

TIME: 10:00 A.M.

INSPECTION: Monday,
November 3rd & Tuesday,
November 4th, Beginning
at 9:00 A.M.

or by Appointment

CRG AUCTION

HIGHLIGHTS:

■ Multi-Million \$\$ New Stores Inventory, Pumps, Motors, Bearings, Valves, Controls, Transformers, Stainless Steel Pipe, Wire, High Pressure, Steam, Hydraulic Fittings ■ Caterpillar 3508B 1,000 kW Diesel Generator ■ Paper Converting Equipment ■ Forklifts, Crane, Racking, Compressors ■ Machine, Weld, Fabrication Shops
■ (200+) Like New VIDMAR Tool Cabinets ■ **To Be Sold by Private Treaty:** Industrial Real Estate ■ 500,000 Square Foot Building on 11 Acres, with Wastewater Treatment System & Dam ■ (2) Modern Paper Machines From Pulping to Finishing ■ 10.7 MW Combined Cycled Electric Power Co-Generation Plant—Rebuilt in 2008



TERMS OF SALE

On-line bidding available. To be sold in accordance with CRG Terms of Sale as published on our website and in the auction catalog. A buyer's premium will apply.

DIRECTIONS

From 93N: Follow US-3 N for approximately 35 miles.



crgauction.com

1.800.300.6852

IP-8214267